

Figura

Planning Control Applications

PC Number: PC 0070/07

Proposal: To establish building height at 3 floors plus semi basement.

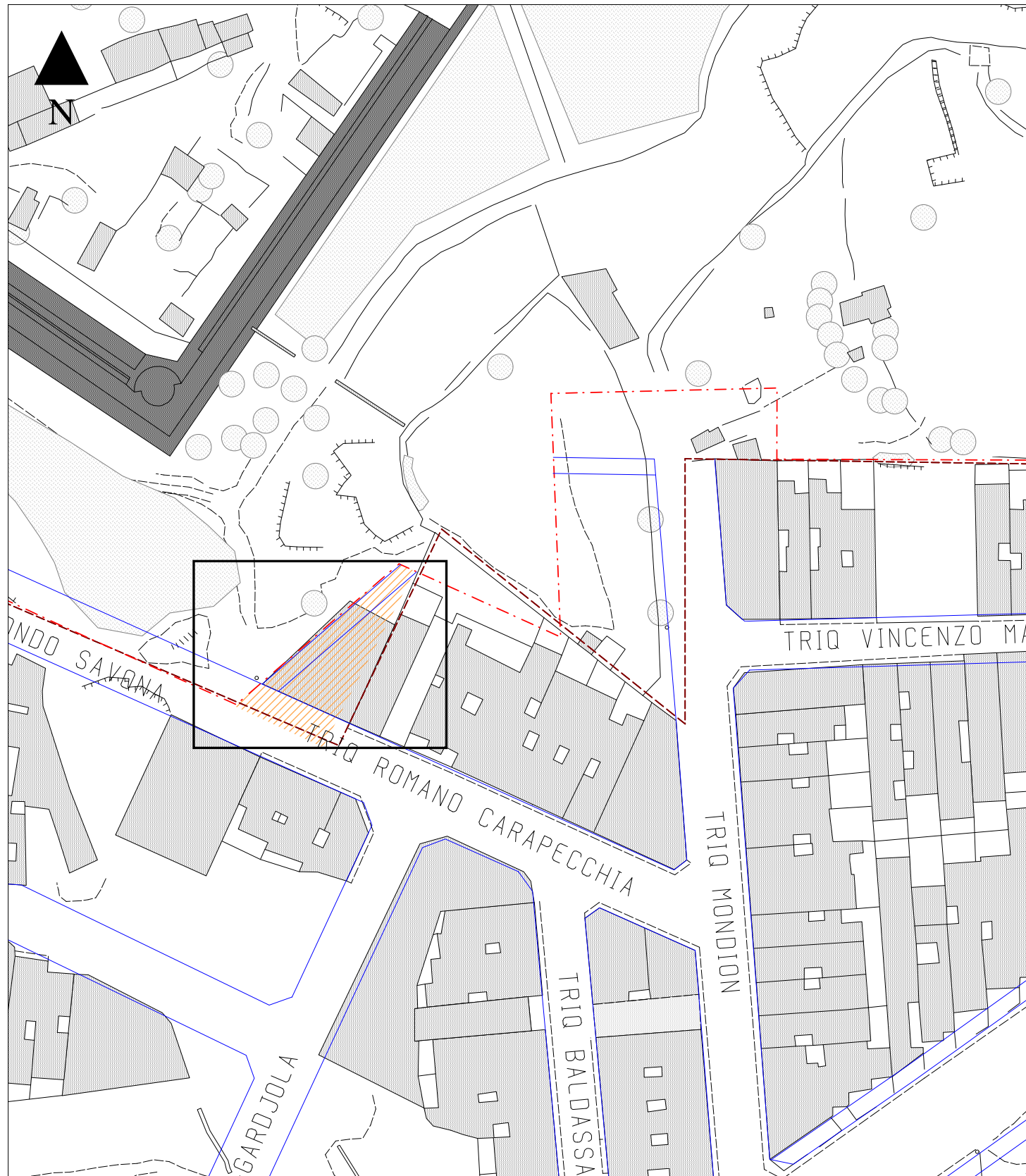
Location: Site at Triq Romano Carapecchia, Fgura.

Architect: MEPA

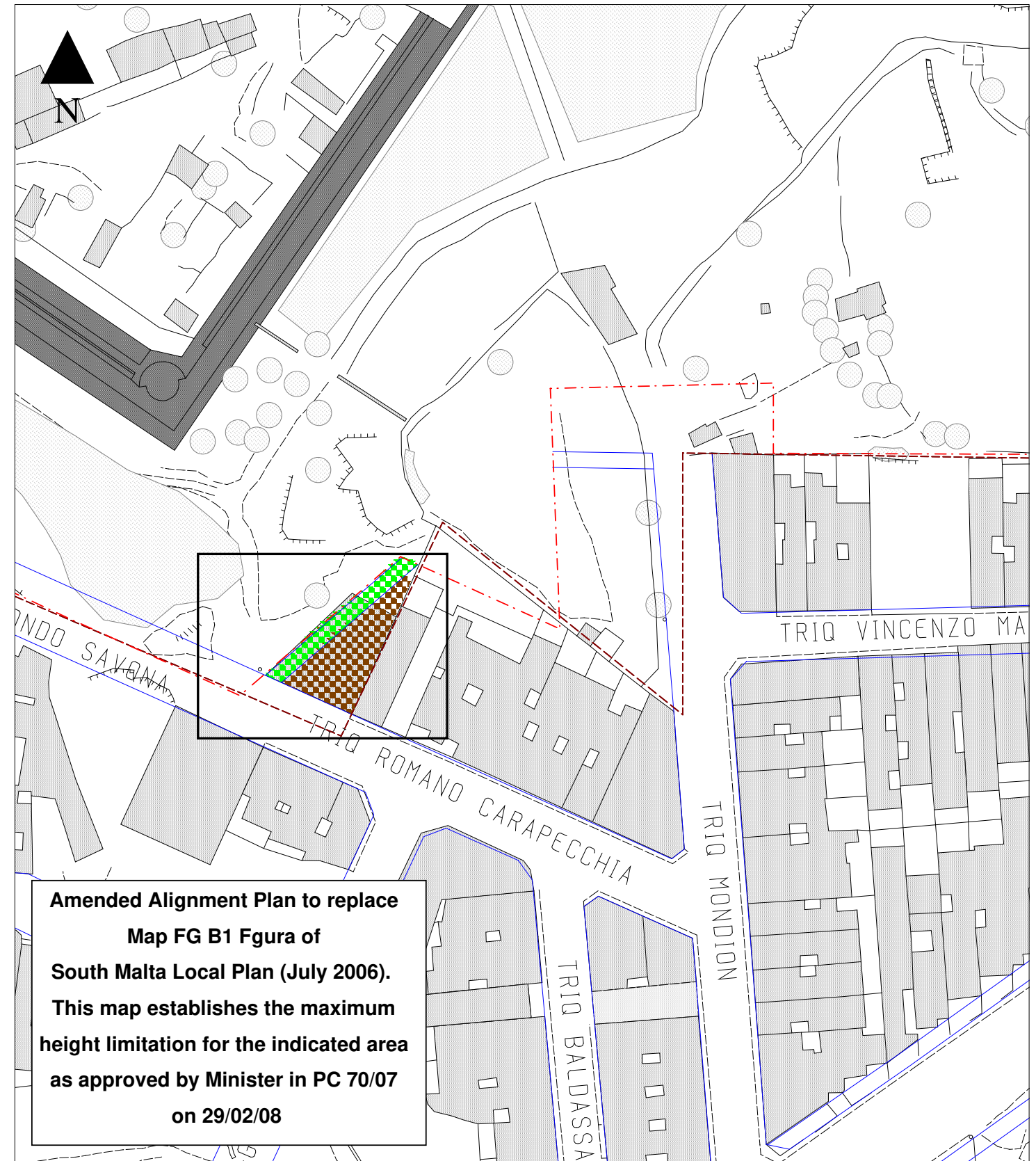
Applicant: MEPA

Date of Endorsement: 29th February, 2008.

Conditions: N/A



Former Scheme Layout



Amended Alignment Plan to replace Map FG B1 Fgura of South Malta Local Plan (July 2006). This map establishes the maximum height limitation for the indicated area as approved by Minister in PC 70/07 on 29/02/08

Revised Scheme Layout

SOUTH MALTA LOCAL PLAN



L-Awtorita` ta' Malta Dwar l-Ambjent u l-Ippjanar
Malta Environment & Planning Authority

Key

- Limit to Development
- Urban Conservation Area
- Industrial Area Boundary
- Projected HOS
- Alignment
- Location of Amendment
- Easement
- Kerb Alignment
- Road Markings
- DZ Rationalisation Site
- Projected Road
- Shared Area
- Pedestrian Area
- Open Space
- Private Garden
- Front / Side Garden
- Villas
- Terraced Development (Residential) (Building Height 3 Floors + semi-basement)
- Community Facilities

Changes to Scheme 55, Fgura PC 0070/07

Scale : 1:1000	Date : January 2008	Figure : FG B1
<small>INDICATIVE ONLY Not to be used for measurement or direct interpretation. Maps to be used in conjunction with Policy Document.</small>		
<small>Base Maps - 1988 Survey Sheets Copyright Mapping Unit, Malta Environment & Planning Authority</small>		